



## 5781 Annual Newsletter



### **CELEBRATE THE HIGH HOLIDAYS WITH US!** *September 2020*

All events will be conducted using ZOOM online unless marked with asterisk (\*)  
When you join KBS or register with us, we will send you the links for ZOOM

Rosh Hashana evening	Friday eve	Sep. 18	6 - 8 pm
Rosh Hashana morning	Saturday	Sep. 19	10 am - 12:30 pm
Tashlich	To be announced, depending on coronavirus news		
Kabbalat Shabbat Shuvah	Friday eve	Sep. 25	6:20 pm
<i>Candle-lighting led by Yehudah &amp; Aviva Plaut on Zoom</i>			
Shabbat Shuvah	Saturday	Sep. 26	11 am
<i>Torah Study on Zoom led by Yehudah &amp; Aviva Plaut, Parshat Ha'azinu</i>			
Kol Nidre	Sunday eve	Sep. 27	6 - 9 pm
Yom Kippur	Monday	Sep. 28	10 am - 1:30 pm
Mincha Torah Service			2 pm
Mid-afternoon class			3 pm
Yizkor			4 pm
Neilah-Havdalah			5 pm
☆			
?Simchat Torah Celebration	?Sunday	?Oct. 11	To Be Announced
KBS Annual Meeting	Sunday	Oct. 18	10 am
<i>Via ZOOM</i>			

Your **MEMBERSHIP APPLICATION / CONTRIBUTION FORM** is [online](#) or a [printable version](#) is included with this newsletter.

Call KBS Treasurer Michael Bernstone at (808) 883-3809 for more information.

Admission to all the High Holiday Services is free of charge for members of Congregation Kona Beth Shalom. Non-members who wish to attend are asked to make a contribution to help defray the costs of conducting the services. **No one will be turned away for inability to contribute.**

## CALENDAR

September 2020

### All KBS activities on ZOOM

SUN	MON	TUE	WED	THU	FRI	SAT
		Sept. 1	Sept. 2	Sept. 3	Sept. 4 6:20pm Candle-lighting*	Sept. 5 11am Torah Study*
Sept. 6	Sept. 7 (Labor Day)	Sept. 8	Sept. 9	Sept. 10	Sept. 11 6:20pm Candle-lighting*	Sept. 12 11am Torah Study*
Sept. 13	Sept. 14	Sept. 15	Sept. 16	Sept. 17	Sept. 18 6pm Rosh HaShana Eve	Sept. 19 10am Rosh HaShana Day
Sept. 20	Sept. 21	Sept. 22	Sept. 23	Sept. 24	Sept. 25 6:20pm Candle-lighting*	Sept. 26 11am Torah Study Shabbat Shuvah*
Sept. 27 6pm Kol Nidre	Sept. 28 10am Yom Kippur	Sept. 29	Sept. 30	Oct. 1	Oct. 2 6:20pm Candle-lighting*	Oct. 3 11am Torah Study*



### Rabbi Daniel Lev



Kona Beth Shalom is delighted to welcome back Rabbi Daniel Lev to lead High Holiday services. He lives in Honolulu with his wife, Margaret Walkover.

Rabbi Lev began serving the Jewish communities in Northern California and the San Francisco Bay Area 38 years ago. As both a Rabbi and Maggid (Jewish storyteller), he was inspired by his mentors, Rabbis Shlomo Carlebach (z"l), and Zalman Schachter Shalomi (z"l), to dedicate himself to sharing the heavenly joy and earthy delight of Jewishness with everyone. He uses song, story,

Jewish ritual, meditation, and humor to convey the everyday holiness of Jewish tradition.

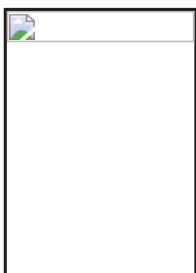
You can view him telling a story at a gathering of the Aquarian Minyan in San Francisco on the occasion of their 36th Anniversary, on [YouTube](#).

Rabbi Lev received rabbinical ordination in 2005 from a private Beit Din and from Rabbi Zalman Schachter-Shalomi (z"l). He led High Holiday Services for Kona Beth Shalom in 2007, 2008, 2016 - 2019, and has been back to Kona to lead Shabbat and holiday services, study groups and shabbatons for Kona Beth Shalom to the delight of all who have attended.

Dr. Lev received his PhD in 1994 from the Wright Institute of Graduate Psychology in Berkeley, California. In 2014 he moved to Hawaii from Berkeley, California, where he served the Kaiser Permanente community in Oakland as a chronic pain specialist. He now offers that service in private practice on Oahu.



### Shari Joy Berman



Shari returns to Kona in her role as High Holidays cantorial soloist alongside Rabbi Lev. Shari was president of Congregation Kona Beth Shalom from 2006 through 2012 when she moved to Japan to assume the role of Associate Professor at Hirosaki National University. Since then, Shari has returned to Kona several times to serve as cantorial soloist for the High Holidays as well as to lead Shabbat Services on multiple occasions. In addition, Shari has been bringing a group of Hirosaki University students to learn about health care as they are actively working on ideas to improve our lives both in Hawaii and in Aomori Prefecture. They spoke about this at the Civic

Center to an appreciative audience. Members of KBS have often served as host families for these students, much to all our mutual delight.

As president of KBS, Shari encouraged many of our members to study Torah and to learn Hebrew. She officiated

more than a dozen Bat and Bar Mitzvahs here, even several after she moved back to Japan. Shari was born in Chicago but moved with her family to Ashiya, Japan (Kobe area) at the age of nine. She was educated there as well as in the United States with a particular interest in and advanced degrees in language studies. In 1998, Shari and her spouse, Alice Bratton, moved to Hawaii.



## How We ZOOM

Since March 2020, KBS has been gathering for worship service and other meetings using ZOOM. Although this is not a perfect substitute for in-person services we have found it to be meaningful for us and far safer in this time of COVID. In fact, we have been able to add to the frequency and program variety of our get-togethers. Every Saturday morning, Yehudah & Aviva Plaut have been leading a Torah Study class from their home. Our once-a-month Saturday morning Shabbat Services have continued. These have been led by Shari Berman (from Japan!), by Rabbi Lev (from Oahu) as well as Aviva & Yehuda Plaut (from their home in Kealahakua), and Trina Yerlick assisted by her husband Shai (from their Lilikoi Inn in Holualoa). We see the Torah as it is being read thanks to the wonders of video.



Rabbi Lev, Shari Berman, Vic Greenspan and the Plauts have been planning a High Holidays Service that will work well on ZOOM. We anticipate that it will be meaningful and enjoyable for all and will feature new ways to celebrate together long distance.



## Congregation Kona Beth Shalom Annual Meeting

The KBS Annual Meeting will take place via ZOOM on Sunday, October 18th at 10:00 am. We will send out the ZOOM connection information to all KBS members prior to the meeting. During the meeting we'll discuss plans for KBS for the coming year and elect Trustees to our Board. If you have suggestions, come to the meeting. If you are interested in joining our Board, email [Vic Greenspan](#) before October 11th, and then be sure to come to the meeting! Our present Board is shown below with the expiration dates of the trustees' three-year terms. Nominations will be accepted at this meeting. The maximum number of Board members is eighteen (not including the immediate past president).

<u>Name of Trustee</u>	<u>Term expires</u>	<u>Name of Trustee</u>	<u>Term expires</u>
1. Ruth Ader	2022	7. Joel Gimpel	2020*
2. Vivienne Aronowitz	2020*	8. Una Greenaway	2022**
3. Shari Berman	2022	9. Victor Greenspan	2022
4. Michael Bernstone	2022	10. Alan Silverman	2022
5. Barry Blum	2022	11. Nella Silverman	2022
6. Elaine Dobinson	2021	12. Trina Yerlick	2022

**\*\*Immediate past president. \*Term ending now and trustee standing for reelection.**

After the new Board is elected, the congregation will vote to select the new officers for the coming year. Each officer's term is one year. Current officers are:

- **President:** Vic Greenspan
- **1st Vice-President:** (Vacant)
- **2nd Vice-President:** Ruth Ader

- **Treasurer: Mike Bernstone**
- **Secretary: Nella Silverman**

Any active member may stand for office. Nominations will be accepted at this meeting.



## The Year in Review -- Do you remember?

### AUTUMN 2019

Our autumn quarter was full of many special events. We began with the KBS Annual Meeting held on September 15th. We elected members and officers to the Board of Trustees, reviewed budget plans for the coming year, and discussed other important congregation activities. The current list of officers and board members is above.



Our celebration of the **High Holidays** was next, taking place from September 29th through October 9th and followed with a joyous **Simchat Torah** celebration on October 20th. **Rabbi Lev** from Honolulu led us once again with solemn and meaningful prayers and song for Rosh Hashanah and Yom Kippur, and **Aviva Plaut** and her team of *leyners* conducted Torah readings to inspire us for the coming year. Our local musicians were also on hand to beautify our services.

We give our heartfelt thanks to all who participated, and invite others who wish to do so to contact us via email or phone. Participation is open to all, which is what makes our holiday celebrations so special.

In September, **Hebrew School** began again for the year with four KBS students and our Hebrew teacher **Trina Yerlick**. KBS Hebrew school is open to members and non-members for a small fee. Bat and Bar Mitzvah preparation is incorporated and the children participate in holiday events and special activities in the community.



In November, we had two most remarkable events. KBS member and film-maker **Sara Nealy** premiered her documentary film "**Black Fire, White Fire**" in Kona about our own cherished Torah scroll and its remarkable journey from the Holocaust ashes of the Jewish community in the Czech town of Polná to Kona Beth Shalom, halfway around the world. All those who attended this gala were deeply moved by her film which was, thanks to Sara, free to the entire community,

Then, at our November Shabbat service, we joined in celebration of the 50th wedding anniversary of KBS members **Nella & Alan Silverman**. **Aviva Plaut** led the service, and Nella & Alan read from the Torah *parashah Chayei Sara* (Genesis 23:1-24:9), joined by their daughter Rachel. How special is that?! Following services, the Silvermans treated us to Kiddush and an oneg lunch.



## WINTER 2019

Winter, such as it is in Kona, got off to a roaring start. We held our **Annual Chanukah Party** on December 29th at the Old Airport. It was a huge success in attendance, food, festivities and fundraising. Many thanks to **Barry Blum** for coordinating the event and for leading **Kona's Jewish Traveling Wedding Band**, to **Auntie Lani Lee** and her **Na Kupuna 'O Kona Ali'i Halau**, and to all KBS board members for their participation before, during and after the event. Once again our master technician, **Alan Silverman**, set up and ran the complex sound system. A huge thank you as well to all of the non-board member volunteers, including **Shai Yerlick** for manning the popular *dreydl* table for two hours; to **Jan Rae** for her help at the welcome table, to **Aviva & Yehuda Plaut** for coming early to help set up and for their help during the event, and to everyone else who volunteered his/her time. A huge thank you to the entire community for donating so generously to local area foster children at the Chanukah event! Gift certificates totaling \$593 were collected and have been delivered to the Children's Justice Center for distribution to Kona-area foster children for their 2020 birthdays. It was a beautiful expression of the holiday.



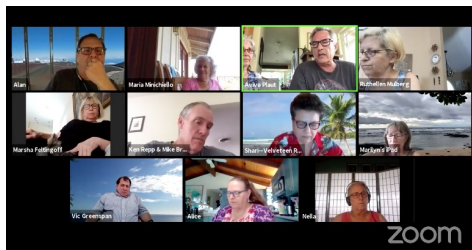
Taking place at the start of January was the marriage of **Shari Berman & Alice Bratton** performed by **Rabbi Daniel Lev** on Oahu. *Mazel Tov*, and best wishes!

Our January monthly Shabbat service at the **Hawaiian Queen Coffee Garden** was lead again by Portland, OR visitor **Priscilla Kostiner**. Priscilla always delights us with her vast knowledge and experience as a lay congregation leader.

In February, **Dr. Alex Rosenstein** gave a lively talk entitled "**The Jewish Journey: From Settling in the Russian Empire to Exodus from the Soviet Union,**" at Kona Joe's Coffee in Kealahou. This was part of KBS's "**Varieties of Jewish Experience**" series. Born in the Black Sea port city of Odessa when Ukraine was still part of the Soviet Union, Alex and his family of dissident Jews emigrated in the 1970s to America, where he grew up to become a renowned orthopedic surgeon. Over the years, he also maintained a keen interest in the dramatic history of his native Ukraine and the rest of the old Soviet domain. His insights, personal experience and in-depth research have led Dr. Rosenstein to write, so far, two history-based political thrillers: "Double-Edged Sword," published in 2017, and "Sword of the Kremlin," just out last year.



## SPRING and SUMMER 2020



Our remaining events were drastically changed once the coronavirus pandemic hit us. However, thanks to our highly capable **Alan Silverman**, we were able to get up to speed holding "virtual" events via the online meeting application ZOOM. Also, thanks to the dedication and hard work of **Aviva & Yehuda Plaut** we not only continued our Shabbat monthly services, but added weekly candle lighting and Torah study events. The Plauts also conducted a **Passover Seder** from their home via ZOOM (the virtual matzoh ball soup was delicious!). Thanks also to our President **Vic Greenspan** for his leadership in these activities, which are of course open to all. One not-so-small benefit of these online sessions is that we now have members from all over the planet joining us! If you have any technical issues with attending via ZOOM please let us know so we can help you. It looks like this mode of operation will continue for some time until it is safe for us to meet in person, so please tell us if you are having difficulties connecting.

Throughout the year, many members of our congregation helped lead and read Torah at our Shabbat services, including **Aviva Plaut, Yehuda Plaut, Trina Yerlick, Vic Greenspan, Marilyn Anderson, Alan & Nella Silverman**, and **Shari Berman** and **Priscilla Kostiner**. **Joel Gimpel, Yehuda Plaut & Aviva Plaut** provided beautiful musical support for our prayers and songs.

During this past year, Kona Beth Shalom members not only brought food items to our own holiday celebrations but we also donated a total of \$1552.00 for the **Hawaii Island Food Basket**. Our KBS congregation is blessed with enormous good fortune in the form of members who work hard to support our activities to make them possible. This year's Newsletter does not display all the wonderful details of everyone's activities, but it does include some of the most momentous occasions we have had the pleasure of celebrating. Sincere apologies if we neglected to mention you individually or your much-appreciated contribution to KBS. For the coming year we encourage anyone who wishes to do so to participate and to consider serving on the KBS Board of Trustees. It's a wonderful way to serve our community and to make your voice heard. Come to the "virtual" Annual Meeting and let us hear from you! Mahalo again to all. May you stay safe wherever you are.



---

✧

## A Message from Our President

Dear KBS Ohana,

This has been an incredibly challenging time for us all. Thankfully we live on an island where the risk of getting the dreaded virus is so much less than anywhere else. Even though there has been a recent jump in numbers, the danger here is nothing like that on the US mainland. I am so grateful for the support of our wonderful KBS community in helping us adapt to the times. We have hardly skipped a beat in offering services online, and, in fact, we have added weekly candle-lighting on Friday evenings as well as weekly Torah studies online. It has been wonderful to see so many of you participating.

As we approach the High Holiday season our holiday committee is busy working out the details of adapting our services to the online medium. Rabbi Lev will lead us again, and we will have our own Shari Berman provide her cantorial offerings. Members of the community will once again participate with readings and musical accompaniments. We hope that you will join us from wherever you may be.

Thank you to my tireless and hard-working board members and others. To Alan & Nella Silverman for their unwavering leadership at all Shabbat services and other events; Aviva Plaut for her dedication to the monthly Torah readings; Mike Bernstone for his tremendous work as Treasurer; Nella Silverman for her comprehensive board meeting minutes; Joel Gimpel and Yehudah Plaut for their exquisite musical accompaniment; Kona's Traveling Jewish Wedding Band, notably Barry & Gloria Blum for their wonderful tunes; Alan Silverman and Elaine Dobinson for keeping our website in tip top shape, and Alan for all of his technical support in transforming our events on ZOOM; Trina Yerlick for her dedication to our Hebrew and Torah Studies program; Shari Berman, Una Greenaway, Vivienne Aronowitz and Barry Blum for serving as Presidents in past years; Ruth Ader for hosting Board meetings and her support and help whenever needed; and Alysa Freeman for writing our monthly Newsletter at the beginning of this past year and assisting us with our community Tzedakah projects. The board has seen a few changes and departures this year. It is my hope that others in the community will offer to serve. Please join us at the

Annual Meeting to volunteer. Our Jewish community is ready for expansion. We welcome you to join us this upcoming year, 5781, and to expand your journey into Judaism. I would love for each and every one of you to become more active within our congregation. I hope to see you at events this coming year, and, of course, at our High Holiday services. Please remember to complete your membership form so that you can attend.

L'Shana Tovah to you and your families for a sweet new year.

**Vic**  
Victor Greenspan  
President, KBS



---

✧

## Hebrew and Jewish Studies Program

We are starting our fourth year of Hebrew School on Thursday, September 10th at my home in Holualoa, and I am very excited. We will sit at a large table socially distanced from one another. The children will be safe and will learn better this way. We hope to study lots of Hebrew, cover the Jewish holidays, learn many Jewish prayers, and learn about Israel all year long. Most exciting is that we will be learning prayers for Bar/Bat Mitzvah training in preparation for (at least) one Bat Mitzvah this coming year, Leah Hillert.

Whether or not your own child is getting ready for Bat/Bar Mitzvah training, please let us know if you know anyone ages 9-12 who might like to participate in our KBS Hebrew School. Help our school grow!

I look forward to another great year with the awesome kids with whom we studied as well as more wonderful experiences teaching at KBS Hebrew School.

With Aloha,  
*Trina Yerlick*  
Trina Yerlick  
KBS Hebrew School Director



Trina can also advise or refer you if your son or daughter needs Bar or Bat Mitzvah preparation. Contact her at [lilikoi.inn@gmail.com](mailto:lilikoi.inn@gmail.com).

---

✧

## North Hawaii Chavurah

The North Hawaii Chavurah is so grateful to have been able to meet at the **Mauna Kea Beach Hotel** and hope to resume gatherings there when the hotel reopens and it is safe to do so. We have had a busy and productive year, both before and since the start of the present pandemic.

In September we met at Restaurant No. 3 at the Mauna Kea Beach Hotel at 6pm for our monthly gathering and potluck. We were delighted to formally welcome our newest full-time resident, **Leslie Harlib**, who led us in some Jewish melodies to welcome Shabbat. ***Todah Rabah Leslie!***

In November, **Rabbi Sydney Mintz** from Temple Emanu-El in San Francisco officiated.

In December, we celebrated the 1st night of Chanukah with candles and latkes in the Garden room at the MKBH. **Cindy Levy** led the singing.

In January we resumed gathering in the No. 3 restaurant at the Mauna Kea Beach Hotel. We were blessed to have our visiting musician, **Cindy Cohen Levy**, who led us in some songs for Erev Shabbat. In January the North Hawaii Chavurah raised money to help **Elia Groode** attend a Jewish education program in Israel.

On February 22nd we gathered at Hapuna Beach for a sunset picnic, Havdalah and star gazing experience with Keck astronomer, **Greg Doppmann. Greg, Ilene** and their daughter, **Liana**, are all regular NHC participants.

March 13th was our last Shabbat service at Restaurant No. 3. We were fortunate to have **Rachel Shinnar** as our featured speaker. Rachel was born and raised in Israel and is spending her Sabbatical on Big Island with her children, **Liad** and **Maya**. Rachel has been teaching in the College of Business at Appalachian State University in North Carolina since 2004. She spoke about her research on entrepreneurship including female / minority entrepreneurship.

From April on we have had regular ZOOM Erev Shabbat gathering on the 2nd Friday of each month with musician **Cindy Levy** leading from her home in California. Also in April, in response to the pandemic, the group raised enough money to sponsor four Thursday take-out dinners for 600 people prepared at St. James Church in Waimea.

In July, **Nikki Stephens**, one of our members and a vegan chef, along with some others in the group, cooked a vegan meal for 600, and many of our members prepared vegan cookies that were served that night. **Today Rabah Nikki** and all those that helped!

The North Hawaii Chavurah welcomes ideas for future programs. Email [Vivienne](#) or call 936-9001 for information about the Chavurah's activities and to be placed on their e-mailing list.



Vivienne Aronowitz  
North Hawaii Chavurah coordinator

---

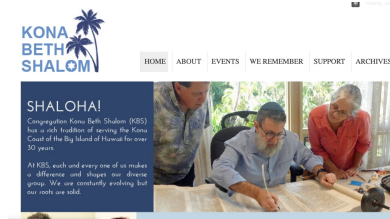
✧

## Our Web site

[The KBS website](#) has continued to provide updated information on services and event schedules, congregation activities and special events. In the past year, we used the website to showcase videos of High Holiday sermons and d'rashes by **Rabbi Daniel Lev**, talks by congregation members including **Dr. Alex Rosenstein** giving his personal perspective on the history of Soviet and Russian Jews, and a provocative address by **Yehudah Plaut** to the annual Kona Interfaith Breakfast.



A comprehensive Yahrzeit list, compiled by **Barry Blum** and **Yehudah Plaut**, was posted on the website, allowing congregation members to search for dates and other information to commemorate family, congregants and friends.



As our in-person services and activities were canceled due to the COVID-19 restrictions, we added ZOOM to the congregation's online presence with a ZOOM Passover Seder, monthly Shabbat services, weekly Shabbat candle lighting and Saturday morning Torah study sessions. Many of these were also live-streamed onto the [KBS Facebook page](#).



## Mi Shebeirach

**Alan Silverman, Karen Breier, Michelle "Katie" Blum, Marilyn Anderson, Yehudah Plaut, Leon Rosner, Barbara Strauss, Ann Rothstein, Jan Rae Gimpel, Trina Yerlick, Rani Merens and Fran Irizarry.**

*Mi shebeirach avoteinu*  
May the source of strength,  
Who blessed the ones before us,  
Help us find the courage to make our  
lives a blessing,  
And let us say, Amen.  
*M'kor hab'racha l'imoteinu*

*Mi shebeirach imoteinu*  
*M'kor habrachah l'avoteinu*  
Bless those in need of healing,  
with *r'fuah sh'leimah*,  
The renewal of body, the renewal of  
spirit,  
And let us say, Amen.

Debbie Friedman



## TIKKUN OLAM and BIKUR CHOLIM

A **Bikur Cholim** outreach via the KBS website raised more than \$1,500 for the **Hawai'i Island Food Basket**, to help provide vital support for our friends and neighbors in need during this health crisis.

**Jewish Community Services** is a non-profit agency serving the Jewish Community of Hawaii. They have launched [their website](#) which includes a calendar of Jewish events across the islands.

JCS is a volunteer organization guided by traditional Jewish values of *tikkun olam* – repair the world – and *gemilut chasidim* – acts of loving-kindness. Their mission is to support and enhance Jewish life in Hawaii through communication, coordination and provision of appropriate social services to those in need. If you or someone you know is in need of assistance, or is joining our community and looking for guidance, call JCS at (808) 258-7121. Or [click here to send them an e-mail](#) and they'll try to help.



## In Memoriam

**Dr. Jerry Klaz** passed away at his home here in Kona on September 7, 2019 at the age of 83. He was born in Los Angeles and was a Family Physician there. He married Paige Halliday 17 years ago. He enjoyed living in Kona but when he visited to Los Angeles he often returned with fresh rye bread to share with us. He had two daughters: Julie, who lives in Hawaii, and Ilana who lives in L.A. who has a daughter, Victoria, age 27. Jerry was buried in Los Angeles.

**Martha "Marty" Miller**, sister of Joel Gimpel, passed away on January 31, at the hospice shelter in Greensboro, North Carolina at the age of 74. She had been a high school math teacher, artist, exercise guru, crochet instructor and author of books and magazine articles on crochet designs, and had earned a PhD in Women's Studies from the University of North Carolina in Greensboro. Her dissertation, "Tevye's Daughters: Jewish Experience and Women's Identity in the United States," explored the meaning of identity in modern American society through the stories told by and about Jewish women.

**Harold Meltzer.** Harold passed away on April 21, 2020 at the age of 79. He was buried next to his parents and older sister at the B'nai B'rith Cemetery in Peabody, Massachusetts. Harold may have been the most accomplished teller of jokes ever. He literally began every phone or personal conversation with a fresh joke, remarkably, one that no one had ever heard before. He was a real estate broker, a poker player, an active member of Kona Rotary and a friend to many of us.

**Dr. Gary Goldberg.** Chief Medical Officer of Queen's North Hawai'i Community Hospital passed away suddenly and unexpectedly on July 30, 2020 (*Tisha B'Av*) at home at age 59. He was an emergency physician for over 30 years including over 20 years at NHCH. Dr. Goldberg received his medical degree from the University of Miami Miller School of Medicine in Miami, Florida. He also served as a member of the Regional Board Of Directors, West Hawaii Division, for HHSC (Hawaii Health Systems Corp., the governing body for Kona Community Hospital).

**The Last Jews of Polná.** Every year, Congregation Kona Beth Shalom takes upon itself the responsibility of reciting Kaddish for the last Jewish residents of Polná in the Czech Republic. Our beloved Torah scroll came from there. The name of each of those 95 individuals of blessed memory is imprinted on a slip of paper along with their age when they were taken in 1943 by the Nazis. One of those slips of paper is given to each individual attending our Yizkor Service so that those names may be read aloud. There is no one else to do this.

*May their memories always be a blessing  
for their families, their friends, and for all of us.*



## Beit HaShamayim

Beit HaShamayim is the name of the Big Island's Jewish Cemetery. Located within Homelani Memorial Park in Hilo on the eastern side of the Big Island of Hawaii, Beit HaShamayim is the only Jewish cemetery on the island. It is open to all Jewish families and persons in need, whether Jewish by birth, choice or family relationship. The Hebrew words Beit HaShamayim and the Hawaiian word Homelani each mean "Heavenly Home." [Click here](#) for more information about Jewish burial or contact [Dr. Barry Blum](#).



## Amazon Smile

T



**AmazonSmile** offers an automatic way for you to support Kona Beth Shalom every time you shop, at no cost to you. Amazon will donate a portion of the purchase price of nearly everything you buy on Amazon to KBS. The price on Amazon Smile is the same as on Amazon.com. Simply go to [AmazonSmile](#) with the web browser on your computer or mobile device and select Kona Beth Shalom to receive donations from eligible purchases before you begin shopping. Your selection will be remembered and then every eligible purchase you make at SmileAmazon will result in a donation. It's easy!



#### QUESTIONS

**Are you receiving duplicate KBS emails?** If so, or for any reason you wish your name to be removed, [let us know](#).

**Would you like to advertise on KBS's website?** The Business Page on the KBS website has room for more advertisements. The cost is \$25/business card listing.

**Is kosher food available in Hawaii? YES!** Besides the limited appearance of individual kosher items at Costco and Safeway, you may now order kosher foods, including meats, from Oahu Kosher, 1670 Makaloa St, Ste 204, Honolulu, HI 96814 under the supervision of Orthodox chef [Yudi Weinbaum](#). They will ship to the Big Island for you.



Click for the online version of the [Membership Application/Contribution form](#) to use Paypal or credit cards.  
If you prefer to mail in the form and payment by check, [click here](#) for a printable PDF version.



Membership Application
Contribution Form
5781 (Sept. 2020 - Sept. 2021)

PLEASE PRINT CLEARLY

Your name:
Name of Spouse or Partner:
Children under 18, with names and dates of birth:
Address:
City: State: Zip:
Home phone: Work phone:
Mobile phone: E-mail:

If you do not wish to have your contact information shared in our membership directory, please check this box

Services will be remotely broadcast via ZOOM

Entry instructions will be supplied upon receipt of payment

Membership Contribution:
Sustaining Membership \$540
Family Membership \$360
Single Membership \$270
High Holiday Services
Yizkor Contribution
Chevra Kadisha Contribution (burials)
Misheberach (healing) Contribution
Jewish Education
Building Fund Contribution
Unrestricted Contribution
TOTAL ENCLOSED:
Non-member Contribution:
High Holiday Services only
Tickets

Please make your payment to Congregation Kona Beth Shalom or to complete using PayPal or credit card, go to konabethshalom.org and click on the SUPPORT, MEMBERSHIP APPLICATION button.

Forward this application to:
Michael Bernstone
PO Box 383205
Waikoloa, HI 96738-3205

no one will be turned away from services for inability to pay



GIVE ALOHA AT FOODLAND, SACK N SAVE AND
FOODLAND FARMS TO HELP US RAISE FUNDS!

Kona Beth Shalom is participating in Give Aloha, Foodland's Annual Community Matching Gifts Program. This program honors Foodland's founder, Maurice J. "Sully" Sullivan, and continues his legacy of giving back to the community.



### ***How It Works***

From Sept. 1-30, customers are invited to make donations of up to a cumulative total of \$249 per person, per organization to participating Hawaii non-profit organizations at checkout. Donations made without a Maika'i Card will not be matched. Individuals must use their own Maika'i Card to make a donation. Foodland and the Western Union Foundation will match a portion of each donation.\*

### ***Matching Gift***

This year, Foodland and the Western Union Foundation will match each donation up to a total of at least \$250,000 for all organizations combined.

### ***How To Donate***

At checkout, present your Maika'i Card and inform the cashier that you would like to make a donation to our organization. If you do not have a Maika'i Card, you may request one. **The five digit registration code for Kona Beth Shalom is 78575.** Your donation will be added to your grocery purchase total. You may give up to \$249 per organization (donations exceeding \$249 will not be matched). The amount you have donated to us and the name of our organization will appear on your receipt. Any donation must be made payable to Foodland, Sack N Save or Foodland Farms. **Donor names will not be released to Kona Beth Shalom, so if you would like us to know of your gift, please forward the information to [Mike Bernstone](#) so that we may properly acknowledge your gift.**

### ***Are These Contributions Tax Deductible?***

These contributions are tax deductible to the full extent of the law. **Please save your store receipt for tax purposes since it will be the only record you will have of your donation.**

### ***How Matching Gifts Will Be Calculated***

Matching Gifts will be calculated after the end of the program. Organizations will receive 100% of all customer donations given to their organization, plus their % of Foodland's matching gift. The portion of the matching gift that each organization will receive will be based on the total dollar amount of customer donations designated to that organization as a % of all customer donations received for all organizations.



**We look forward to 5781 being a wonderful year for all of us.  
On behalf of all the members of Congregation Kona Beth Shalom,  
we wish you a Happy and Healthy New Year --- L'Shana Tovah Tikateivu!!!**

**That's the news, folks. This is the story of your Congregation,  
Kona Beth Shalom, here for everyone since 1980.  
If you like what you read about here, join us for the coming year.  
If you have new ideas, share them with us.  
Please send in your MEMBERSHIP APPLICATION / CONTRIBUTION FORM now.**

**WE ARE NOT COMPLETE WITHOUT YOU!**



---

*Copyright © 2020 Congregation Kona Beth Shalom, All rights reserved.*

Want to change how you receive these emails?  
You can [update your preferences](#) or [unsubscribe from this list](#).

